

ENGLISH.....	5
--------------	---

SUMMARY

1	INTRODUCTION.....	5
2	SYSTEM REQUIREMENTS.....	6
3	SOFTWARE INSTALLATION.....	7
3.1	Preliminary Operations.....	8
3.2	Installation of the Additional Software Components.....	9
3.3	Environment Installation.....	11
4	INFORMATION REGARDING THE INSTALLATION ON WINDOWS™ VISTA AND WINDOWS™ 7 OPERATING SYSTEMS	15

TEXA TMDSTARTER SOFTWARE INSTALLATION

1 INTRODUCTION

This manual describes the installation procedure for TEXA TMDStarter software.

The procedure described applies to all software versions.






If you are installing the software on a Windows™ Vista or Windows™ 7 operating system, consult the chapter INFORMATION REGARDING INSTALLATION ON WINDOWS™ VISTA AND WINDOWS™ 7 OPERATING SYSTEMS.

If you are uncertain about whether you can complete this procedure, contact Technical Assistance.

2 SYSTEM REQUIREMENTS

Below you will find a list of system requirements for installing the software on a PC.

Requirement		Minimum	Suggested
	Service Pack	Service Pack 2	Service Pack 3
	RAM	512 MB	1 GB
	Space on HARD DISK	4 GB	8 GB
	Screen Resolution	1024x600 pixels	1024x600 pixels
	USB Port	Yes	Yes
	Internet connection	Yes	Yes
	Bluetooth	No	Yes
 	Service Pack	Service Pack 2 (Vista)	32/64 bit
	RAM	1 GB	2 GB
	Space on HARD DISK	4 GB	8 GB
	Screen Resolution	1024x600 pixels	1024x600 pixels
	USB Port	Yes	Yes
	Internet connection	Yes	Yes
	Bluetooth	No	Yes

To optimise the use and reduce the risk of eventual compatibility problems, we recommend that this software be installed on a PC exclusively dedicated to workshop use.

3 SOFTWARE INSTALLATION

In order for the software to work properly, some additional components must be installed on the PC.

The software performs a quick scan of the PC to check which additional components must be installed.

The list of additional components to be installed varies depending on the operating system, the service pack, other previously installed versions, etc.

The time required for the installation and its steps depend on the number and type of additional components.



The installation of some additional components may require you to restart the system.

The installation restarts automatically each time the system is rebooted.

If your PC's operating system is very recent, you may not have to install any additional components.

The installation of the software environment begins when all the additional components have been installed.

At this point you may be required to install **Adobe™ Acrobat Reader**.

NOTES

Specific messages will appear on your screen should any problems arise during the installation.

Contact Technical Assistance if the installation cannot be completed successfully.

3.1 Preliminary Operations



Close all active applications.



Disconnect any USB / parallel hardware keys if installing the software on a PC..



Deactivate any Antivirus programmes.



Disconnect any diagnosis device connected via USB to the platform on which you intend to install the software.



Do not turn your PC off for any reason during the installation unless specifically requested by the software.



You must have system administrator rights to install the software correctly.



In order to use the software correctly, we recommend you disable the PC's standby mode from Control Panel - Power Saving Options.

3.2 Installation of the Additional Software Components

During this step, the additional software components are installed.

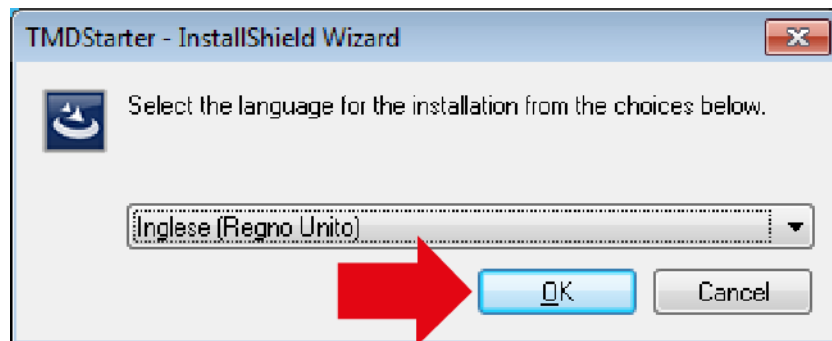
Proceed as follows:

Select the installation language.



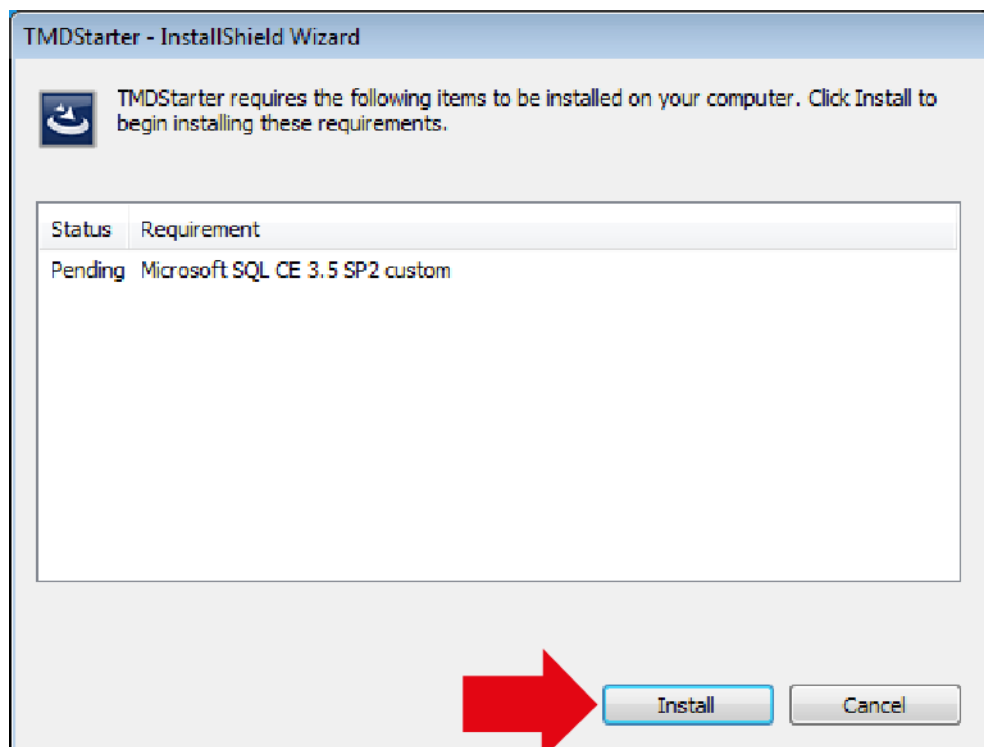
The software will be viewed in the selected installation language.

Click **OK**.

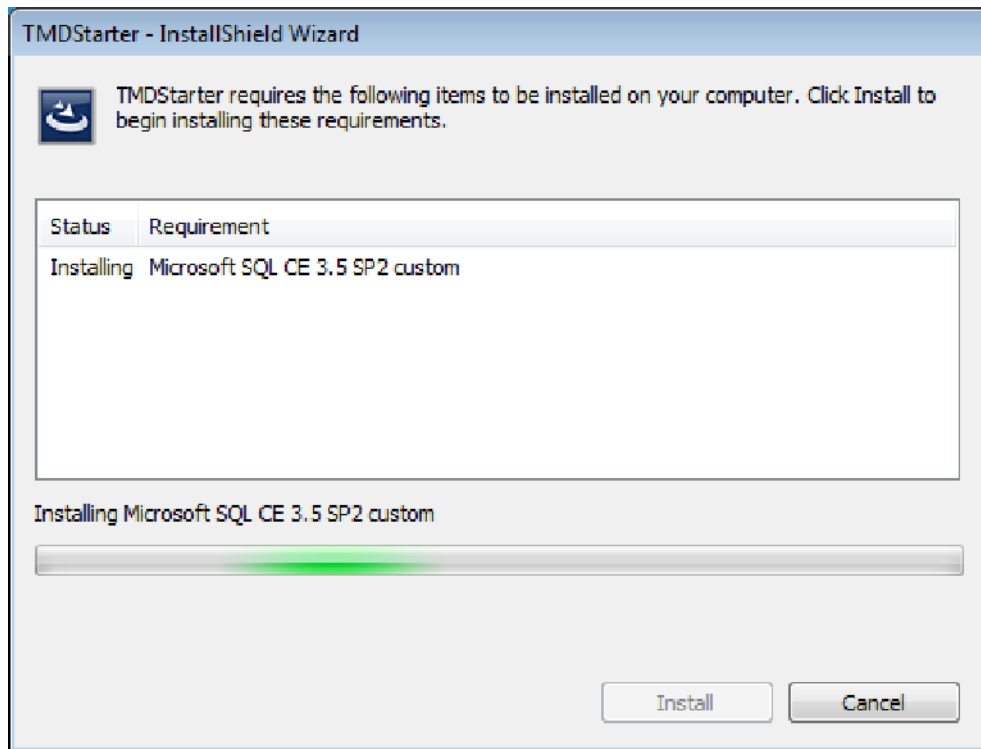


The software performs a quick scan of the PC to check which additional components must be installed.

Click **INSTALL**.



The installation of additional components begins.



The installation of some additional components may require you to restart the system.

Restart the system as indicated.

The installation restarts automatically each time the system is rebooted.

At the end of the unzipping procedure, you may be asked to install **Adobe™ Acrobat Reader**.

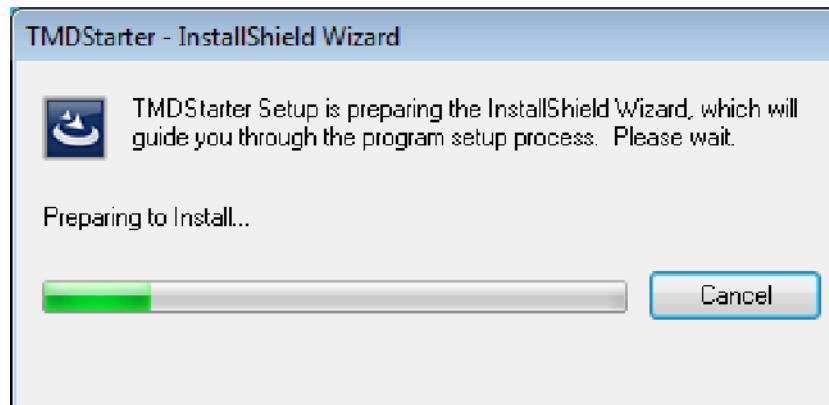
If so, follow the whole guided installation procedure for **Adobe™ Acrobat Reader**.

3.3 Environment Installation

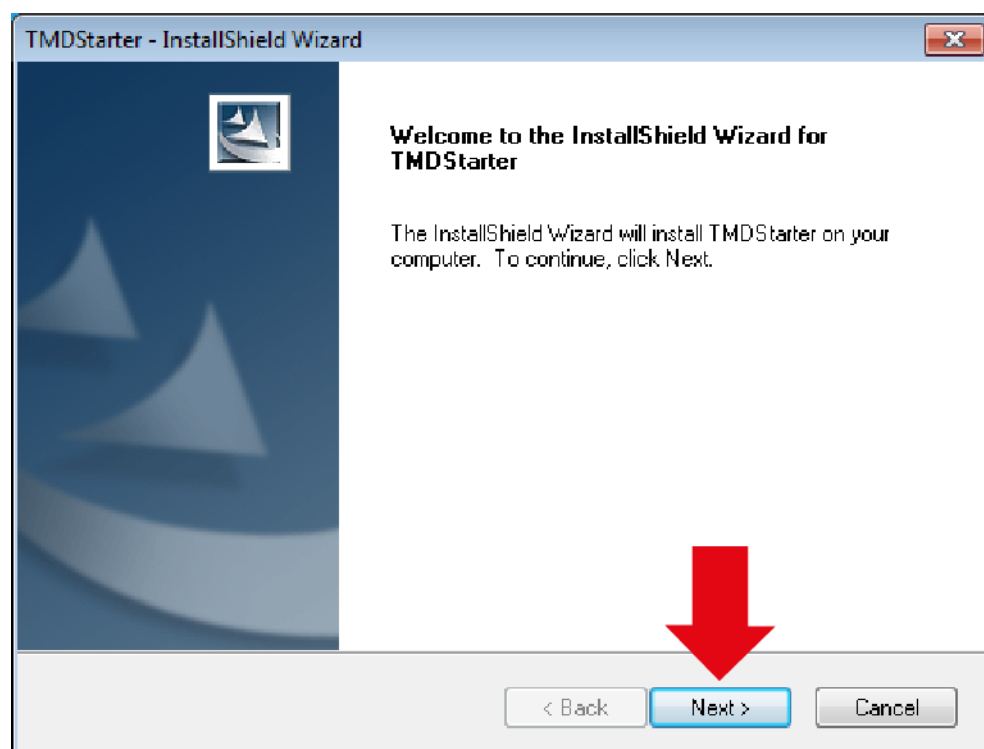
The software environment is installed during this step.

Proceed as follows:

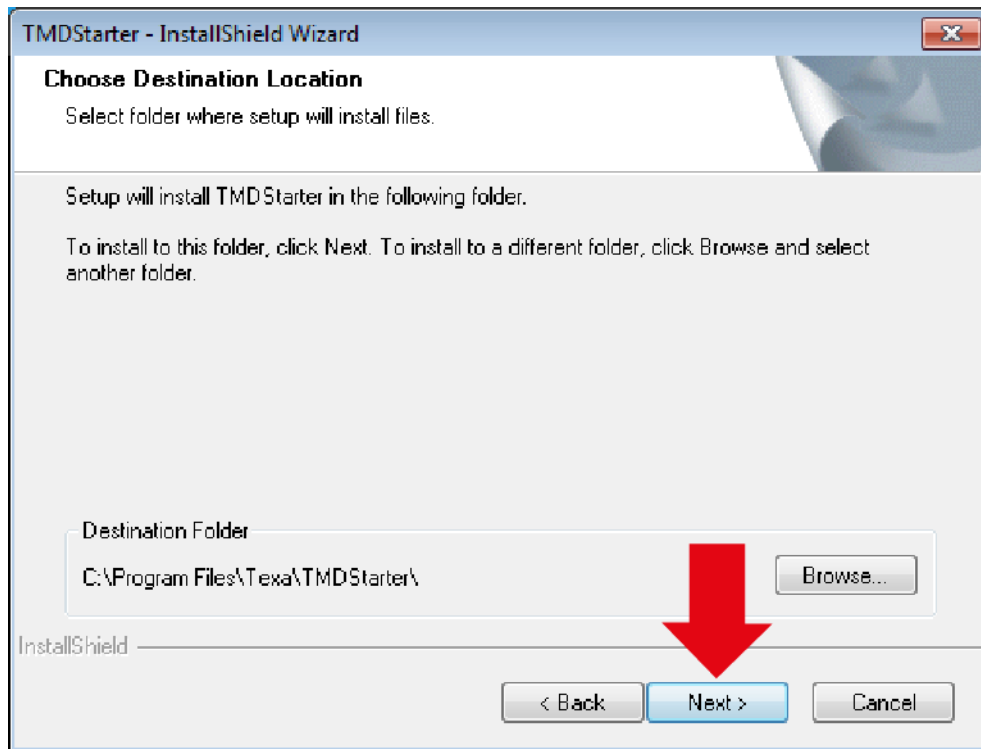
Wait until **InstallShield** is ready.



Click **NEXT**.

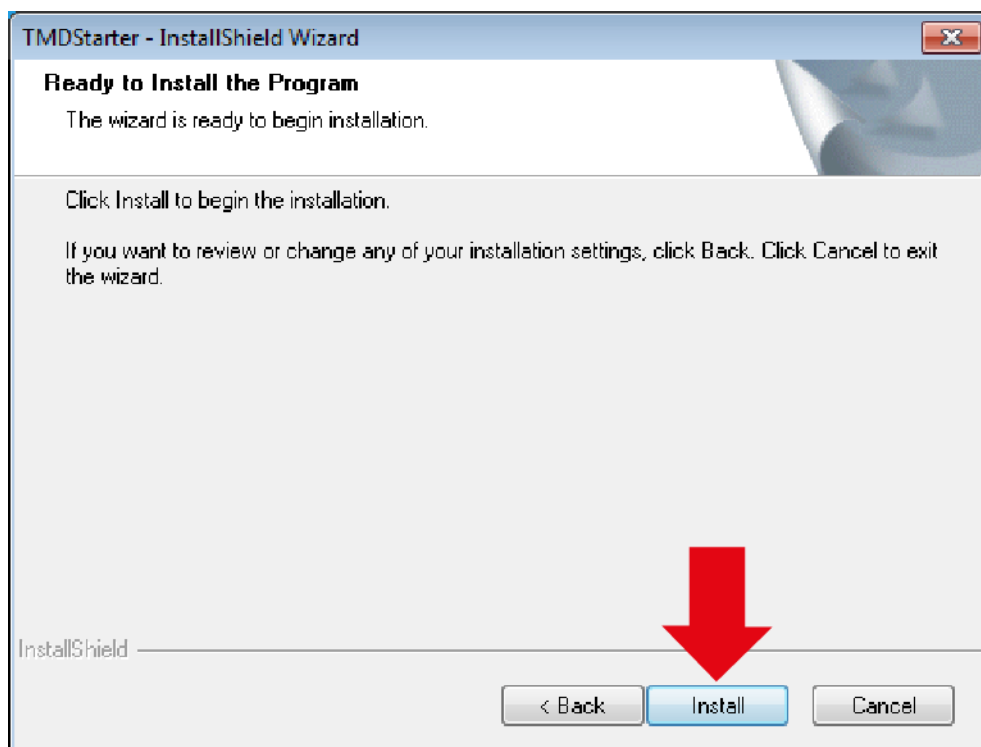


Click **NEXT**.

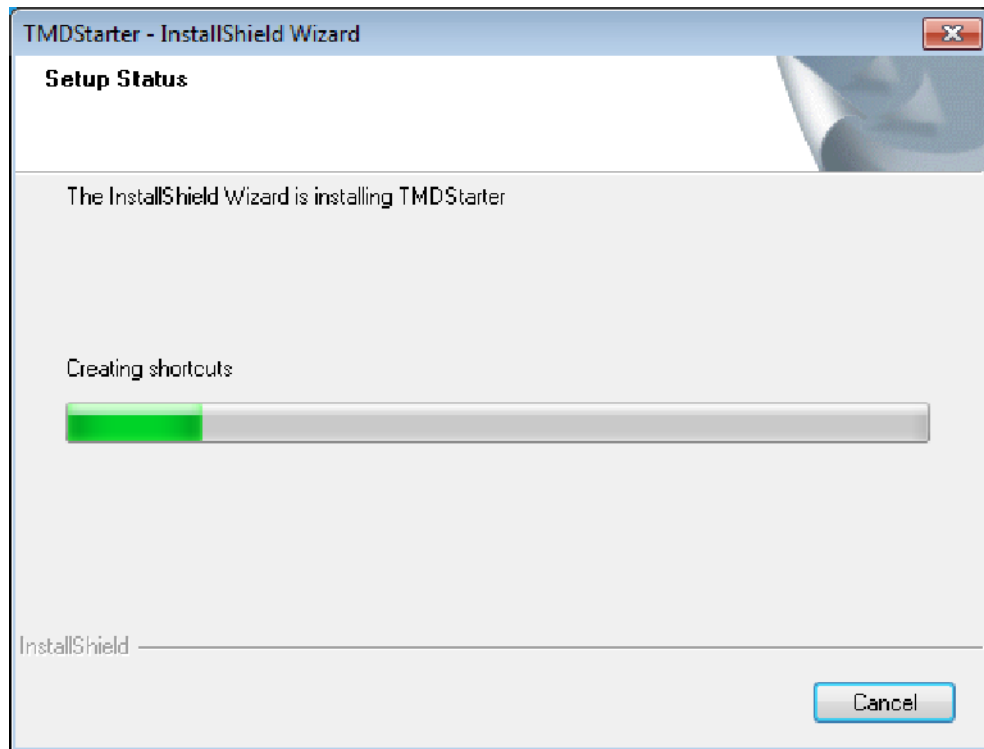


We recommend you do not installing the software using a different procedure rather than the default method suggested unless you are expert users.

Click **INSTALL**.



The environment installation begins.

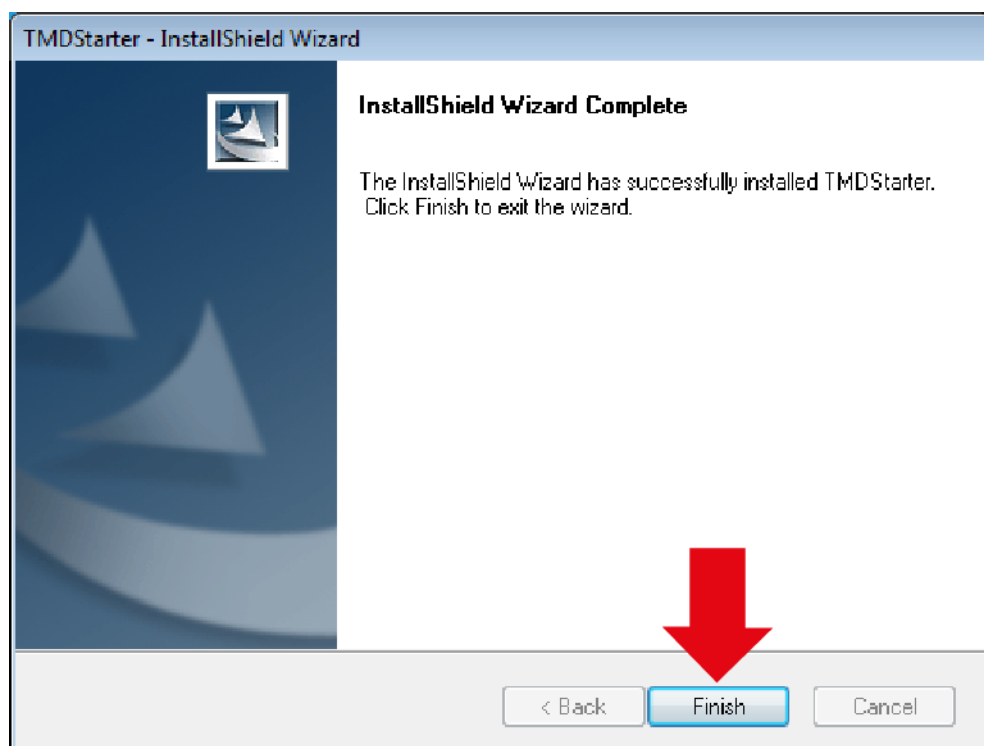


Some of the installation step may last several minutes.




Wait until the various steps of the installation are complete, even if the progression bar is not moving.

Click **FINISH**.



The installation is complete.

This icon appears on your desktop:

Icon	Name	Description	Notes
	TMDStarter	It allows you to launch the software.	--

4 INFORMATION REGARDING THE INSTALLATION ON WINDOWS™ VISTA AND WINDOWS™ 7 OPERATING SYSTEMS

The software installation **Windows™ Vista** and **Windows™ 7** differs from others as a result of the features implemented by the operating systems, in particular the **UAC** security settings.

The **UAC** (User Account Control) is a protection module introduced by **Microsoft™** that manages the licenses of individual PC users in order to avoid dangerous software from being run on the computer or damages to the system's data or components.

The **UAC** intervenes both during the installation and when the software is opened, momentarily blocking its operation.

You may deactivate the **UAC** by editing it's settings in the **Control Panel**.



We recommend that the security settings be modified by qualified personnel only.

For further information regarding the User Account Control see the following **Microsoft™** websites:

Windows™ Vista: <http://support.microsoft.com/kb/975787> (**Windows Vista**)

Windows™ 7: <http://technet.microsoft.com/en-us/library/cc709691%28WS.10%29.aspx>